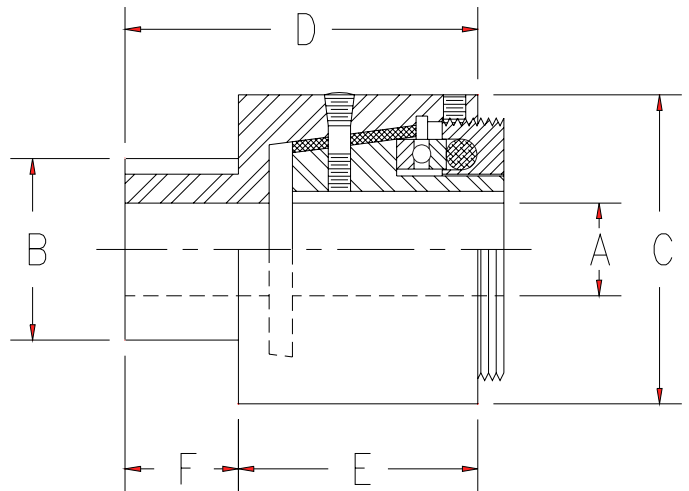


Model E Extended Hub Clutch



The Flaton Model E clutch is designed for the installation of gears, sprockets and similar drive components on the clutch hub.

Reference "F" and "B" dimensions on the drawing for location of the hub. For hubs larger than those shown on the chart below, please contact the factory.

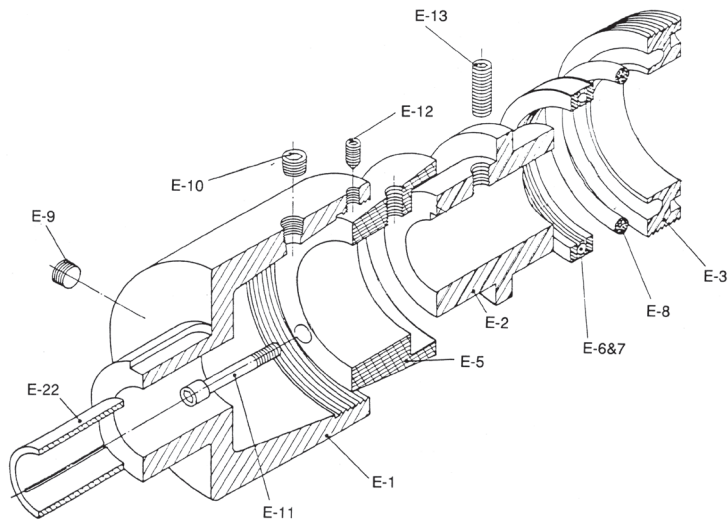


Dimensions

	Max. Bore	Min O.D.							Keyway	
	A	B	C	D	E	F	With Max A Bore	With Min. B Dia.		
10-E	3/4	1 1/4	2 1/2	2 15/16	1 15/16	1	3/16 x 3/32	1/4 x 3/32		
15-E	1 1/8	1 7/8	3 7/16	3 3/4	2 5/8	1 1/4	1/4 x 1/8	1/2 x 1/8		
20-E	1 1/4	2	4	4 3/8	2 15/16	1 1/2	1/4 x 1/8	1/2 x 1/8		
25-E	1 3/8	2 1/8	4 5/8	5 5/16	3 9/16	1 3/4	5/16 x 5/32	1/2 x 1/8		
30-E	1 15/16	3	6	6 7/16	4 1/2	2	1/2 x 1/4	3/4 x 3/16		
35-E	2 5/8	3 3/4	7 1/8	7 5/8	5 3/8	2 1/4	5/8 x 5/16	7/8 x 1/4		
40-E	3 5/8	5 1/2	9 5/8	9 5/8	7 1/8	2 1/2	7/8 x 5/16	1 1/4 x 3/8		
45-E	4 1/4	7 1/2	11 7/8	12 3/4	8 3/4	4	1 x 3/8	1 1/2 x 1/2		

All dimensions are in inches.

Parts List



- 1 Housing
- 2 Thrust head
- 3 Adjustment nut
- 5 Friction cone
- 6 & 7 Thrust bearing assembly
- 8 Pressure ring
- 9 Pipe plug
- 10 Pipe plug
- 11 Capscrews-4 (On size 40 and 45 only.)
- 12 Conepoint setscrew
- 13 Setscrews
- 22 Bushing (Bushings are optional.)

When requesting parts or additional information, please reference the clutch size. For the housing, #1, reference "A" bore and keyway, "B" diameter and keyway, and "F" length. For the thrust head, #2, reference "A" bore and keyway size.